

# ACA Conference

An aerial photograph of a coastal area with a long, straight pier extending from a shoreline into clear, turquoise water. The pier is a light-colored concrete or metal structure with a railing. To the left of the pier, there is a small area of land with some greenery and a few buildings. To the right of the pier, there are several large, complex offshore structures, possibly oil rigs or platforms, with various pipes and cranes. Several smaller boats are visible in the water around the pier and the offshore structures. The sky is a clear, bright blue.

September 2025



# Introduction

## 3 KEY - TAKE AWAYS

### 1. Strategic Infrastructure

- i. KMSB Facility:
  - i. Technical Data & Cruise Relevance
  - ii. Operational Efficiencies

### 2. Port of Broome

- 1. Environmental and Community Impact

### 3. The Cruise Opportunity





# Introduction

**Andrew Natta**

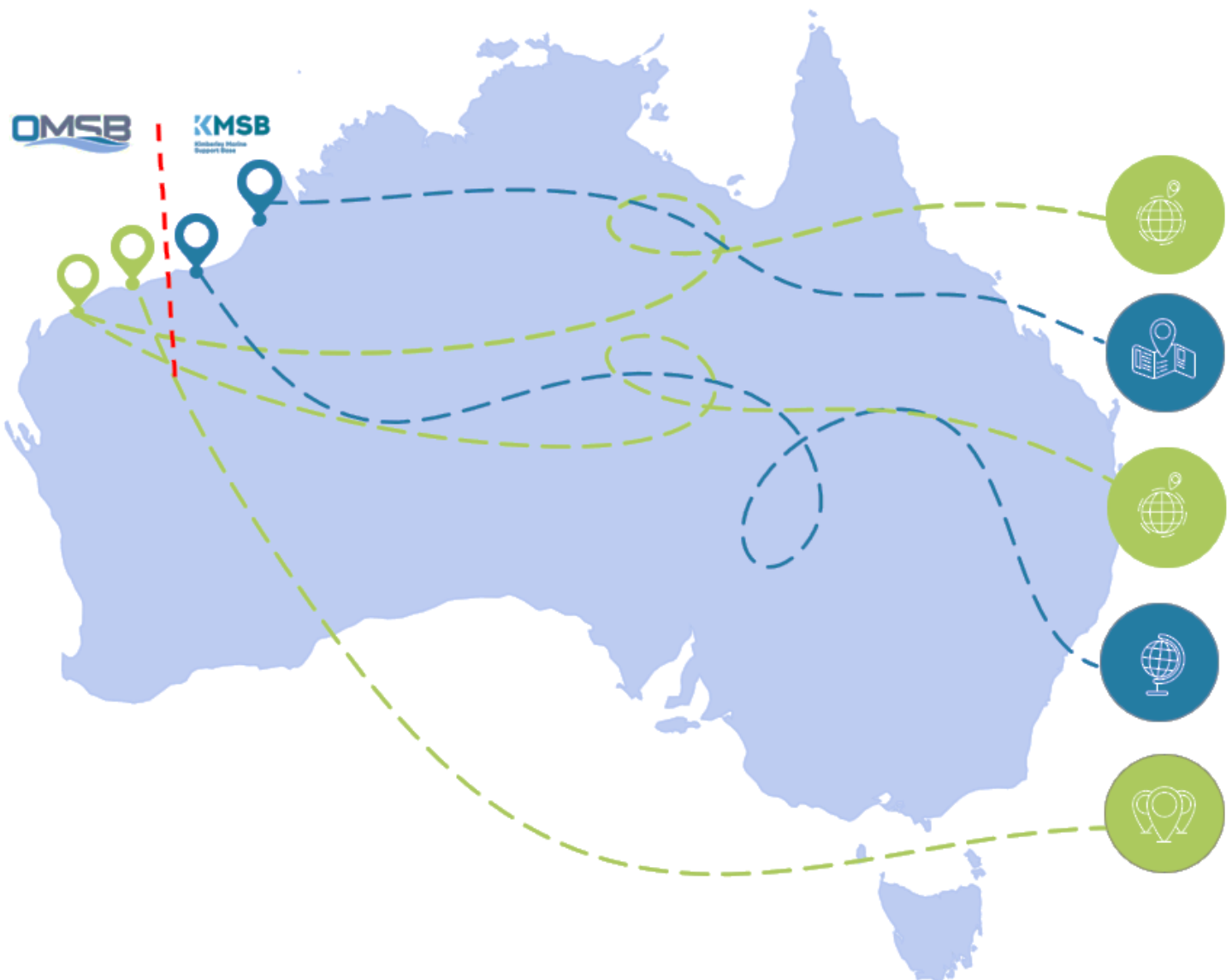
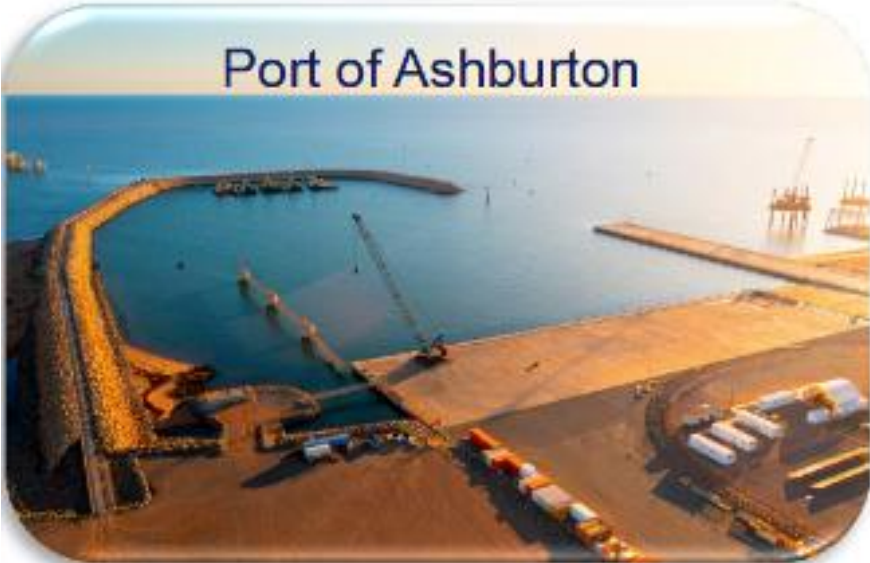
KMSB - Managing Director  
OMSB -Executive Chair

**Chris Ciriello**

KMSB Executive Manager  
Corporate Commercial



# Comprehensive Northwest Maritime Logistics Network



**01 – Onslow**  
Started in 2014 – operational

**02 – Broome**  
Started in 2017 – Construction complete and operational in Sept 2025

**03 – Port of Ashburton**  
Operational since 2023

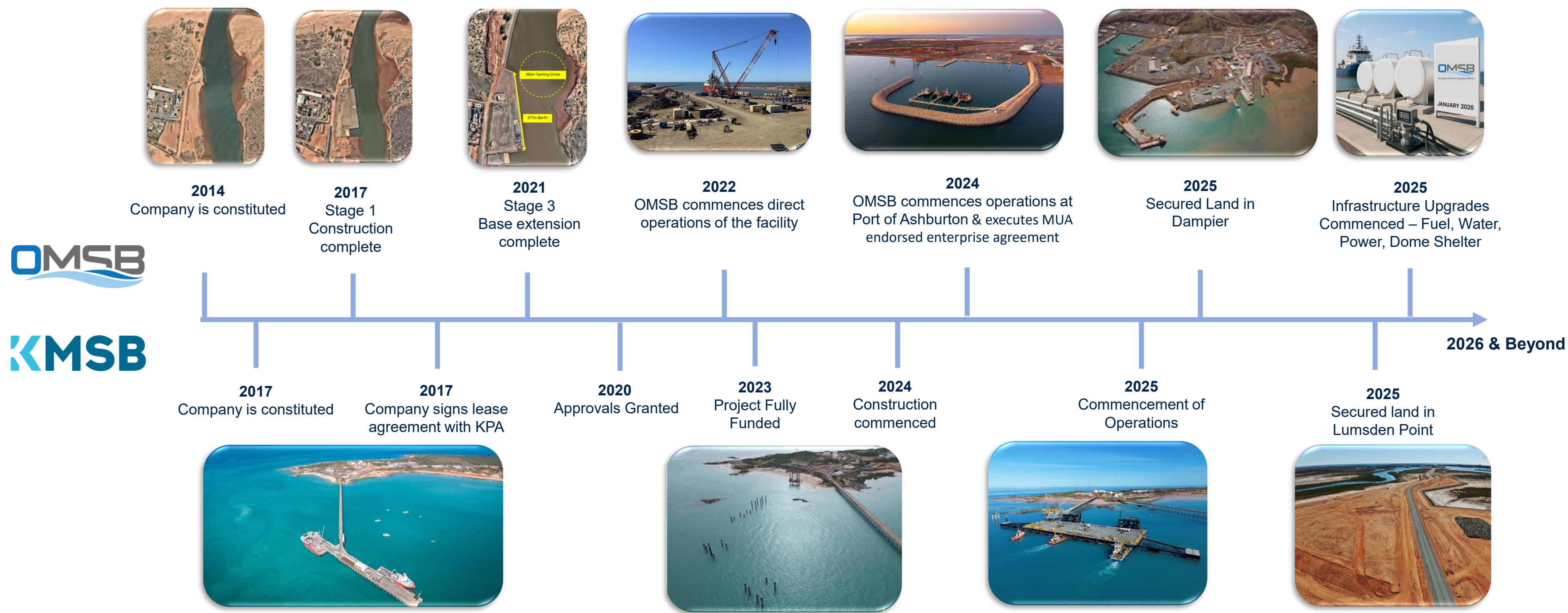
**04 – Port Hedland**  
Nominated land lease in 2025

**05 – Dampier**  
Proposed to secure land in 2025/26





# Strategic Infrastructure Historical Development





# Project Timeline



## September Opening



# KMSB

Kimberley Marine  
Support Base



# KMSB Facility

Floating wharf

## The KMSB Facility

Born from an opportunity to support trade through the Port of Broome.

Key design elements include:



Natural Deep berth pocket of **-16m** LAT,



**9,250m<sup>2</sup> floating facility** - 265m long berth, 50m wide.



**400m** long bi-directional causeway



**85m** linkspan bridge



High load bearing **capability**

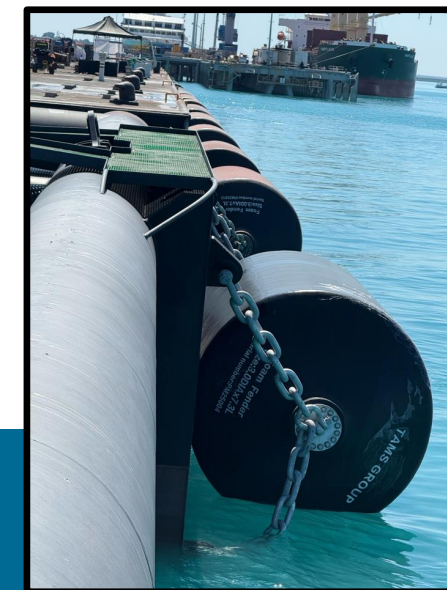
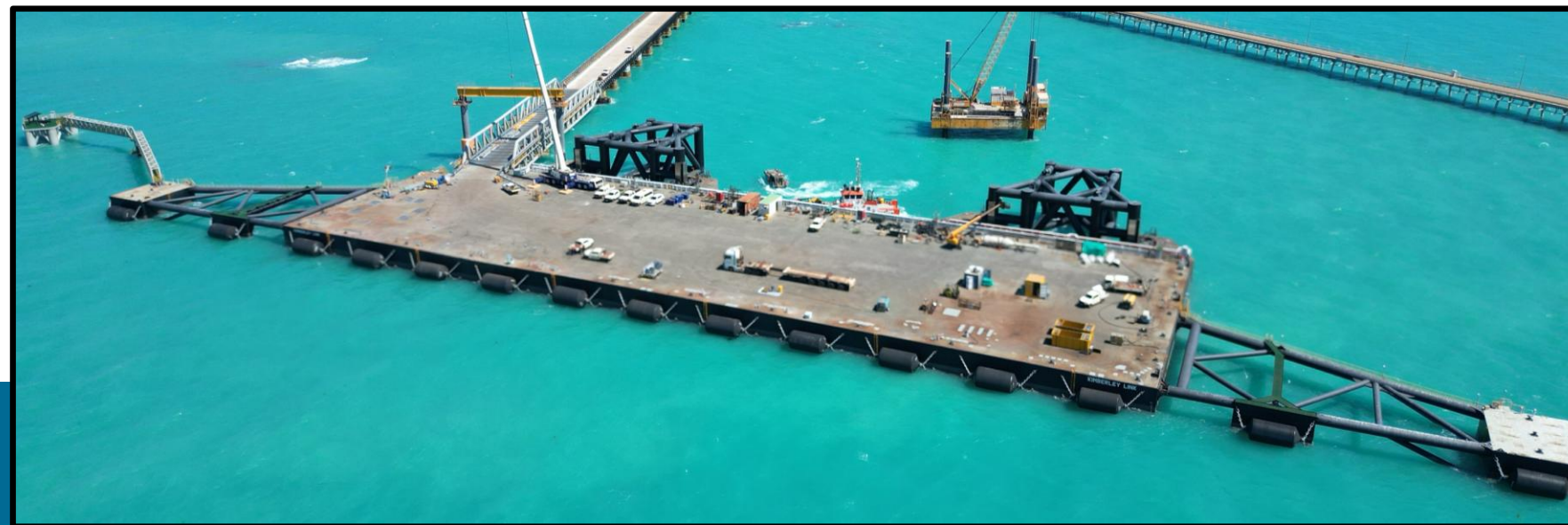
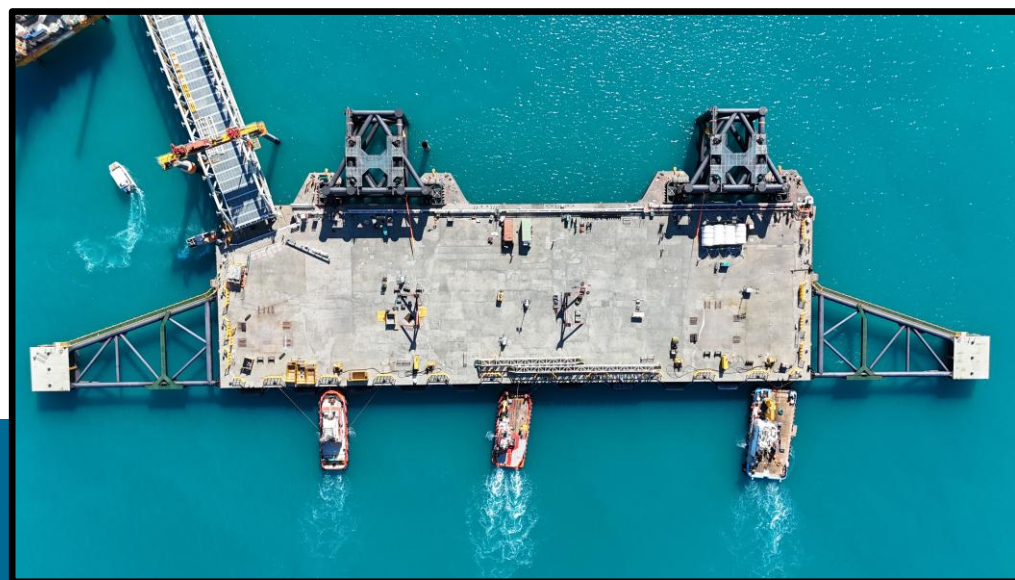
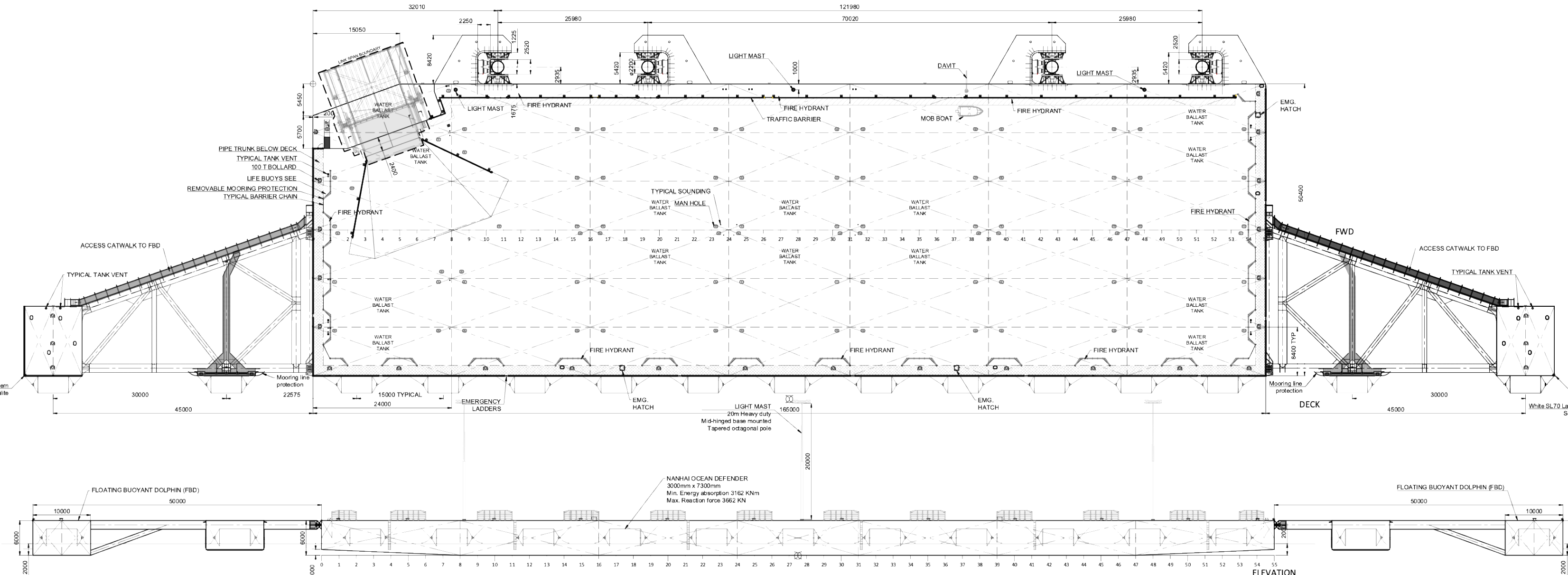


Breasting and mooring dolphin structures to accommodate vessels **348m+** LOA.

**KMSB**

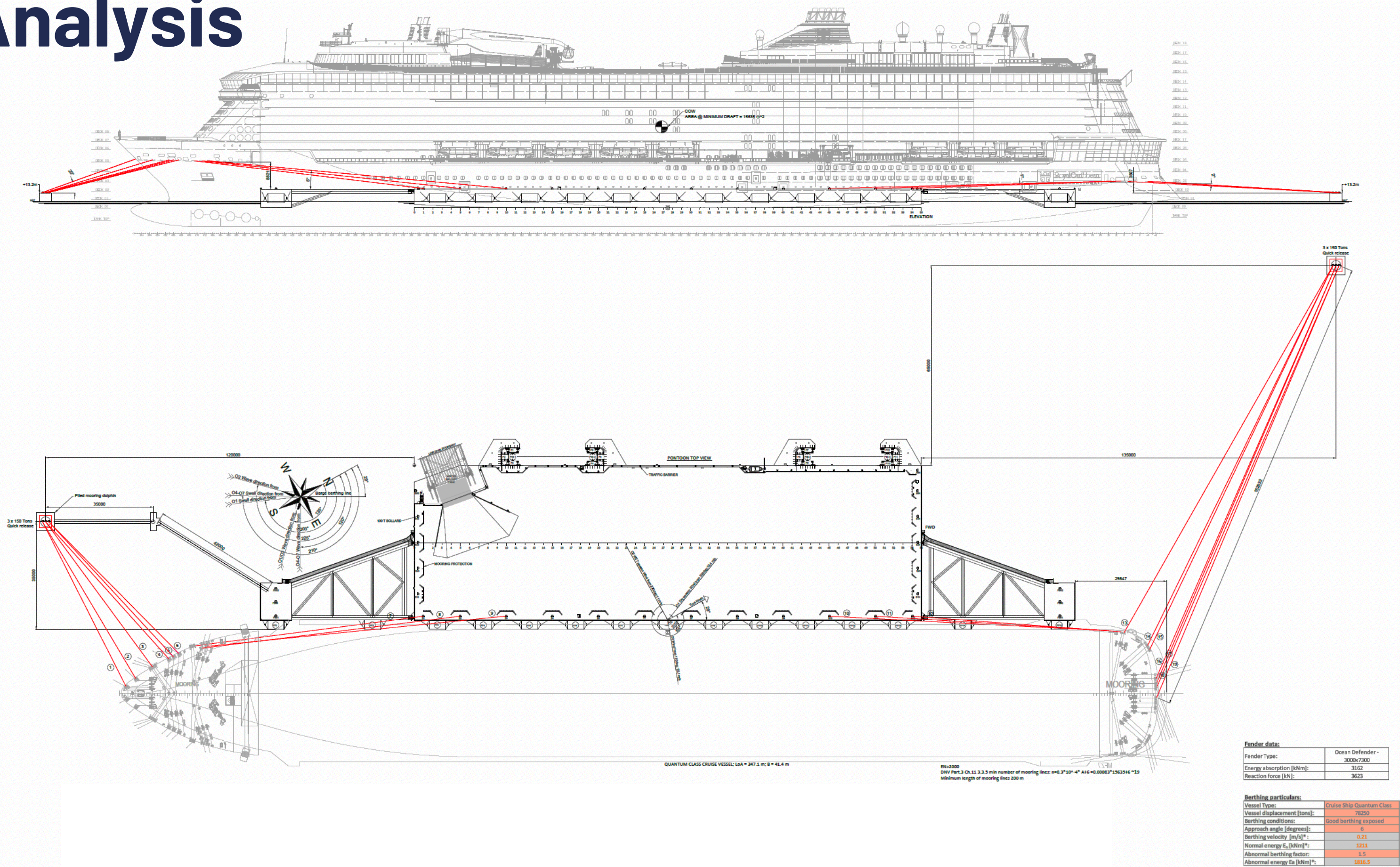


# General Arrangement – Configuration, Bollard and Fenders



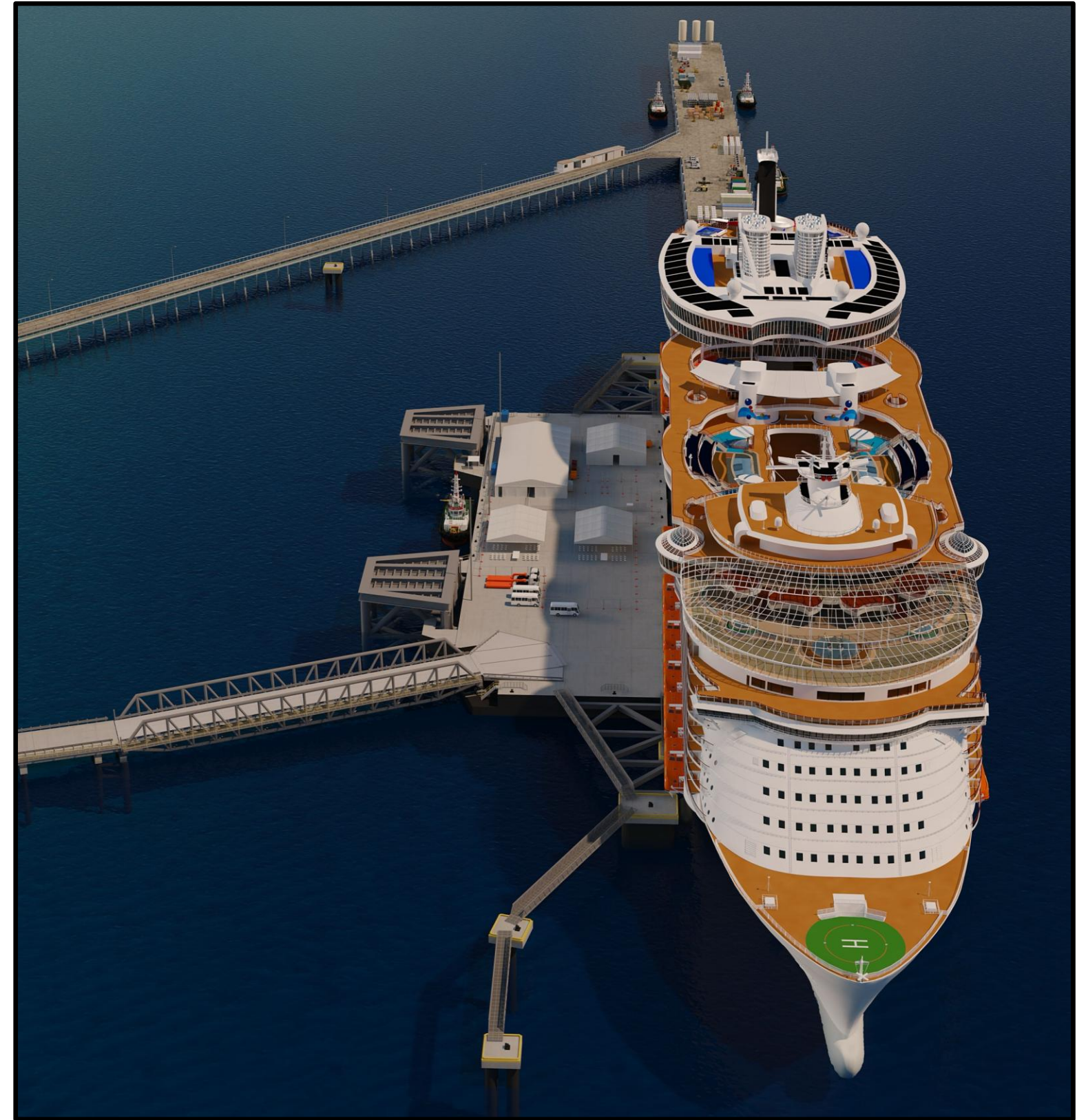


# Mooring Analysis





# KMSB Facility – Large Cruise





# KMSB Facility – Small Cruise Staging on the Wharf





# KMSB Operator Model

With a strong track record in wharf construction and strategic infrastructure. KMSB will be equipped to deliver critical support services tailored to all customer needs.

4 pillars are of service: **Quay side, Land side, Services & Equipment**

## Heavy-Lift Ready:

- KMSB's Kone ESP.6 Mobile Harbour Crane will deliver high-performance capability across O&G, Decommissioning, and Project cargo,

## Full Equipment Suite: On-wharf includes:

- 1612t-rated forklift
- 3t, 4.5t, and 10t forklifts
- Cranes from 30t, 60t, 100t, and 300t units

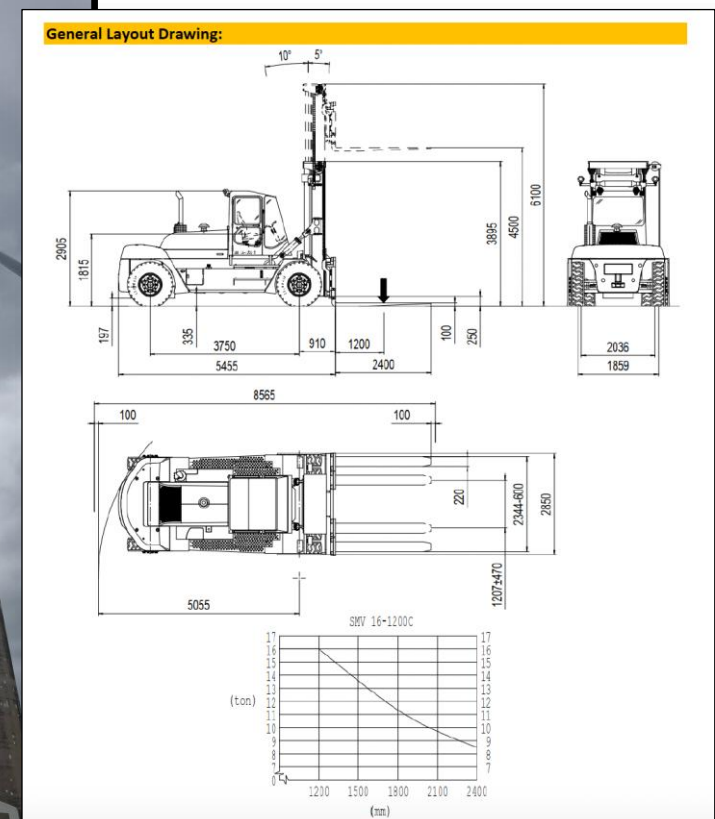
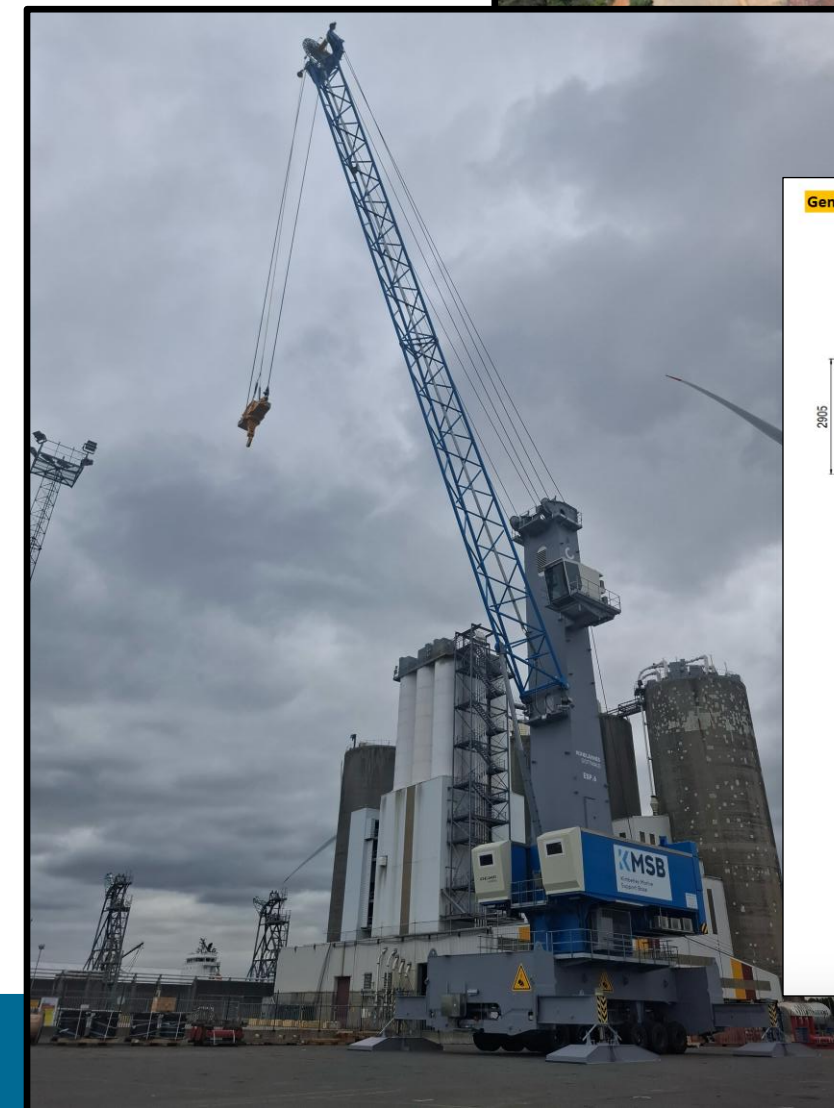
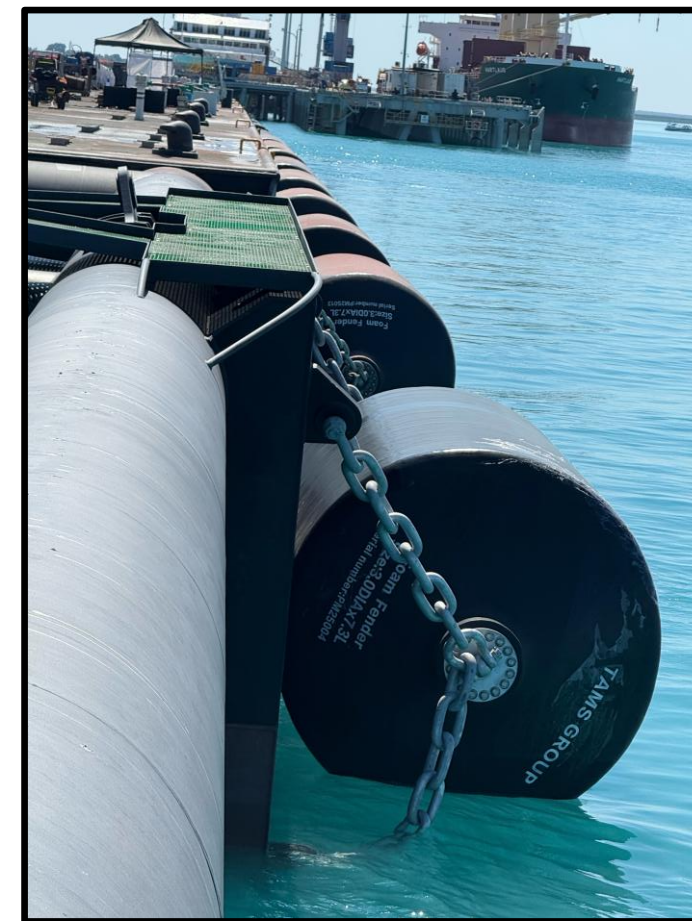
## Integrated Services Corridor:

High-volume pipeline infrastructure will deliver:

- **Fuel:** 200kl/h (3,333L/min)
- **Potable Water:** 100kl/h
- **Power:** Integrated direct to berth

## Experienced Crew:

- Local, trained labour, stevedores and logistics support for quayside and landside operations.



**KMSB**



# Port of Broome

An aerial photograph of the Port of Broome. A long, straight pier extends from the left towards the center. A large barge is moored at a quay in the foreground, with a crane and other equipment on board. A ship is docked at a quay on the right. The water is a vibrant turquoise color.


**KMSB**

- **Leases –**
  - 20+ Hectares of laydown land
  - Seabed lease
- **Licenses**
- Enhancing the '**Capability and Capacity**' of the Port of Broome
- **Economical impact** of Broome

**KMSB**

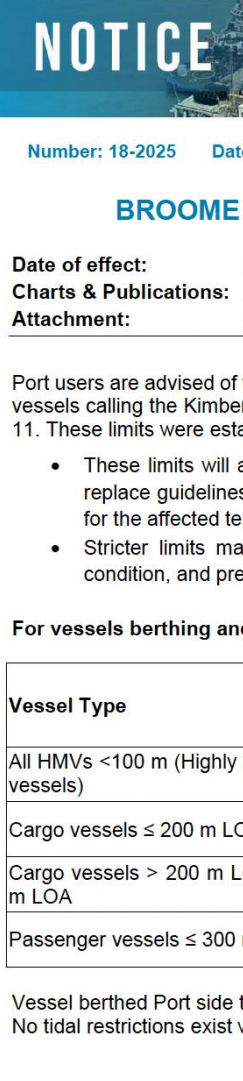


# Local Marine Notice – KMSB facility



**KIMBERLEY  
PORTS**  
AUTHORITY

# LOCAL MARINE NOTICE



Number: 18-2025    Date: 26 August 2025    File ref: HBR019/220086    Enquiries: R Wadhwa

## BROOME – VESSEL SCHEDULING PARAMETERS

**Date of effect:** 26 August 2025  
**Charts & Publications:** AUS 50  
**Attachment:** N/A

Port users are advised of the following operational limits for and conditions which would apply for vessels calling the Kimberley Marine Supply Base (KMSB) terminal, and the KPA terminal Berth 11. These limits were established as a result of recent studies and risk assessments.

- These limits will apply from the commencement of KMSB terminal operations and will replace guidelines in the Port and Terminal Handbook or the Pilot and PEC handbook, for the affected terminal/berths. These limits may be reviewed in due course.
- Stricter limits may be applied on a case-by-case basis depending on vessel type, condition, and prevailing conditions.





**For vessels berthing and departing to/from the KMSB terminal:**

| Vessel Type                                   | Wind (knots) | Tidal range >6m                                   | Tidal range 3m to 6m       |
|---|--------------|---|----------------------------|
|   |              | No movements to occur during:                     |                            |
| All HMVs <100 m (Highly Manoeuvrable vessels) | ≤ 25         | • HW+0 hrs to HW+2 hrs                            | No restrictions            |
| Cargo vessels ≤ 200 m LOA                     | ≤ 20         | • HW+0 hrs to HW+3 hrs<br>• LW+0.5hrs to LW+2 hrs | • HW+0.5 hrs to HW+1.5 hrs |
| Cargo vessels > 200 m LOA, up to 300 m LOA    | ≤ 15         |   |                            |
| Passenger vessels ≤ 300 m LOA                 | ≤ 20         |   |                            |

Vessel berthed Port side to may have additional controls and stringent current requirements. No tidal restrictions exist when tidal range is less than 3 metres.

**Marine and other port users are requested to notify the Kimberley Ports Authority on the discovery of new dangers or suspected dangers to navigation.**

**Kimberley Ports Authority**  
549 Port Drive (PO Box 46) Broome WA 6725

 (08) 9194 3100   
 (08) 9194 3188   
 info@kimberleyports.wa.gov.au   
 www.kimberleyports.wa.gov.au

## LOCAL MARINE NOTICE 18 – 2025

### KPA Terminal 'Berth 11' Movement Restrictions:

| Vessel Type               | Wind (knots) | Tidal range >6m               | Tidal range 3m to 6m |
|---------------------------|--------------|-------------------------------|----------------------|
|                           |              | No movements to occur during: |                      |
| Vessels <35 m LOA         | ≤ 25         | • HW to HW+2 hrs              | No restrictions      |
| Vessels ≥35 m to 60 m LOA | ≤ 15         | • HW-3 hrs to HW+5hrs         | • HW to HW+3hrs      |

No movements are permitted from Berth 11 if there is any overhang north of the KMSB terminal beyond the northern floating dolphin, unless approved in writing by the Harbour Master.

### Note for Broome Pilot Exemption Certificate holders:

All Broome PECs issued to date are **not valid** for operations at the KMSB terminal. Berthing or unberthing at this terminal requires a Marine Pilot. To extend existing PEC validity to include KMSB, Masters must first complete:

- Minimum one daylight berthing and departure, and
- One night berthing and departure (if applicable).

A request may then be submitted to update the PEC. Approval will be based on performance during these operations, Pilot feedback, and Harbour Master review.

### All vessels calling the port, regardless of which terminal they are visiting must:

- Ensure compliance with the weather limits outlined above and contact [operations@kimberleyports.wa.gov.au](mailto:operations@kimberleyports.wa.gov.au) for all vessel scheduling related enquiries.
- Book Tugs, as per the existing port towage guidelines.
- Submit a berth application using the KPA berth booking system.
- For vessels with LOA greater than 35m - Submit the Master's Pre-Arrival Declaration form to KPA for review, in accordance with existing procedures.
- These parameters will be reviewed regularly to reflect actual vessel movements and operational experience at the new terminal.

For berths not specified in this LMN, the standard conditions outlined in the Pilot and PEC handbook will apply, including a wind limit of 25 knots and a current limit of 3 knots.

Any questions regarding this Local Marine Notice should be addressed to the Kimberley Ports Authority by email: [marine@kimberleyports.wa.gov.au](mailto:marine@kimberleyports.wa.gov.au)

Rohan Wadhwa  
REGIONAL HARBOUR MASTER

**Marine and other port users are requested to notify the Kimberley Ports Authority on the discovery of new dangers or suspected dangers to navigation.**

Kimberley Ports Authority

549 Port Drive (PO Box 46) Broome WA 6725

☎ (08) 9194 3100 📠 (08) 9194 3188 📧 [info@kimberleyports.wa.gov.au](mailto:info@kimberleyports.wa.gov.au) 🌐 [www.kimberleyports.wa.gov.au](http://www.kimberleyports.wa.gov.au)







An aerial photograph of a large-scale maritime construction project. A long, narrow concrete and steel structure, likely a floating wharf, extends from the bottom left towards the center of the frame. It is supported by numerous vertical pilings. In the background, several large construction vessels with cranes are visible on the calm, blue water. The sky is a clear, light blue with some wispy clouds. The overall scene conveys a sense of industrial scale and engineering in a marine environment.

# KMSB

A WHARF FLOATED INTO PLACE





**To find out more contact:**

**Chris Ciriello**

*Executive Manager Corporate Commercial Development*

*+61455 511 195*

*Chris@kmsb.com.au*

*kmsb.com.au*