

12 SEPTEMBER 2013

The Role of the Harbour Master

PRESENTATION BY

PHILIP HOLLIDAY – EXECUTIVE GENERAL MANAGER OPERATIONS & HARBOUR MASTER

SYDNEY PORTS CORPORATION

Contents

- Sydney Ports Corp
- Functions of a Harbour Master
- Structure & Powers
- Challenges
- Solutions
- Questions



Functions of the Harbour Master

To safeguard the public right to use and navigate in harbours

To conserve the harbour facilities and provide aids to navigation

To consider safety of the harbour and the need for pilotage

To safeguard the environment and deal with pollution

To provide an effective balance between the inevitable commercial and safety pressures



Sydney Ports Corporation

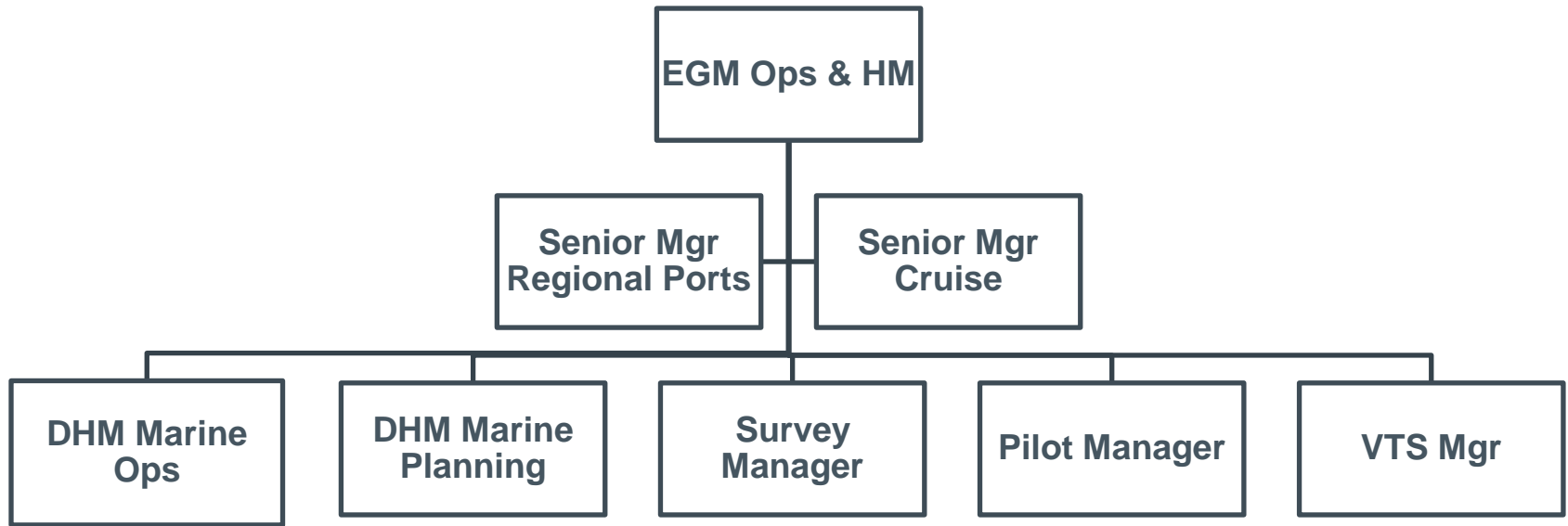
Sydney Harbour is Australia's premier cruise ship destination and the only port in Australia with two dedicated cruise passenger terminals.

Sydney is one of the world's most beautiful and desirable destinations.

In February this year our cruise season peaked with 36 ship visits in just 28 days.



Sydney Ports Corporation - Operations



Has a department of 160 staff

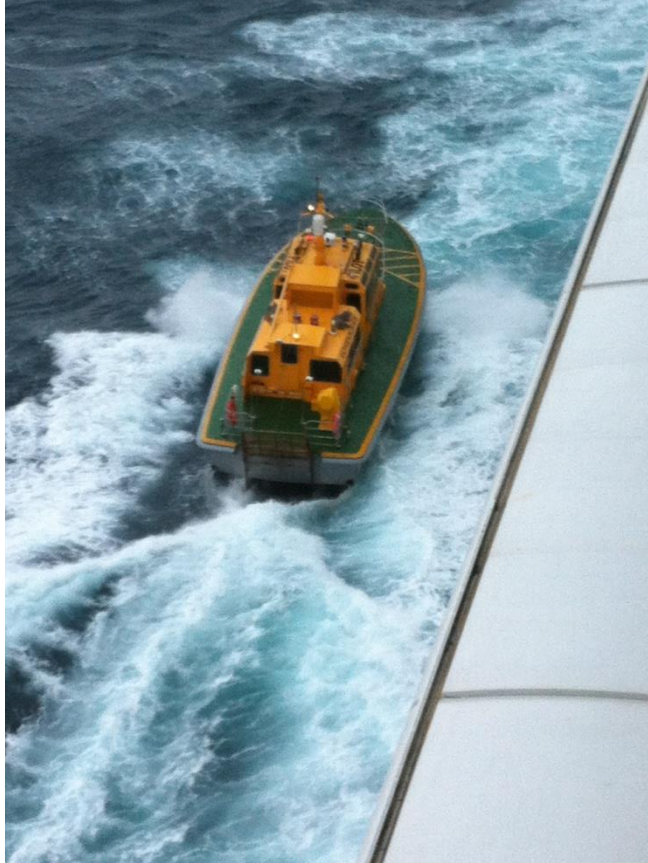
Ensures that the Harbour and Approaches operate safely and efficiently

Ensures that the Port complies with marine and environmental regulations

Responsible for environmental management and emergency planning

Operate under the umbrella of a Port Safety Operating License

Pilotage



- Pilots
- Pilot Exemption Certificates
- Certificate of Local Knowledge

Sponsons!!!



Arggh!

Vessel Traffic Services



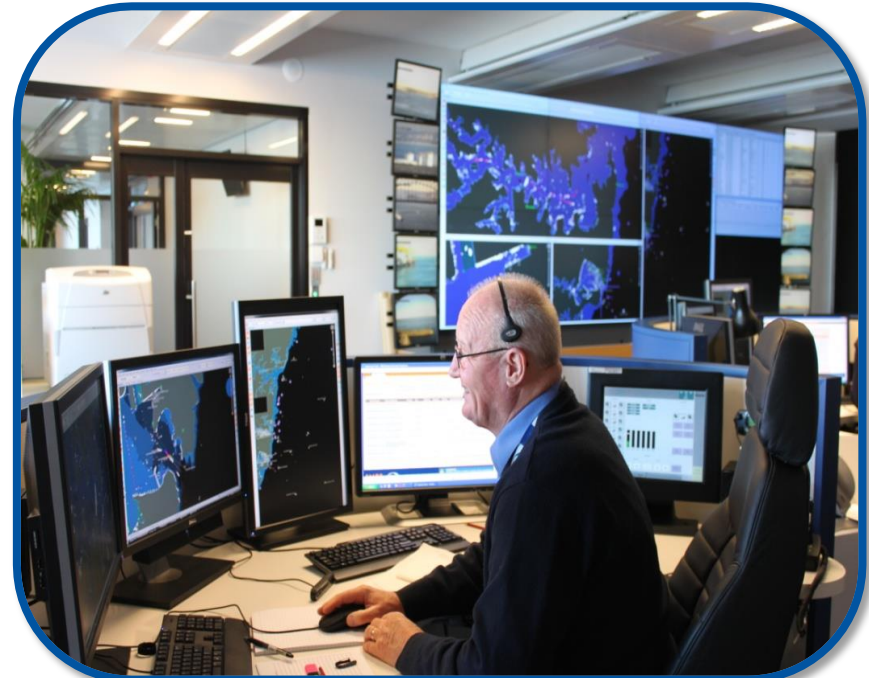
Undertakes surveillance by Radar, Radio, AIS and CCTV.

Provides information, advice and direction to marine traffic

Provides for the safe and efficient movement of commercial vessel traffic

Monitors pilotage logistics

Logs and records data

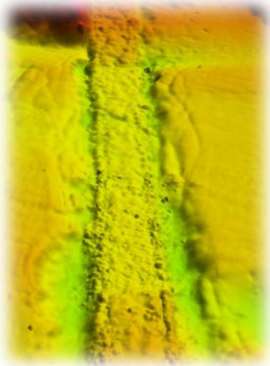


Survey Services

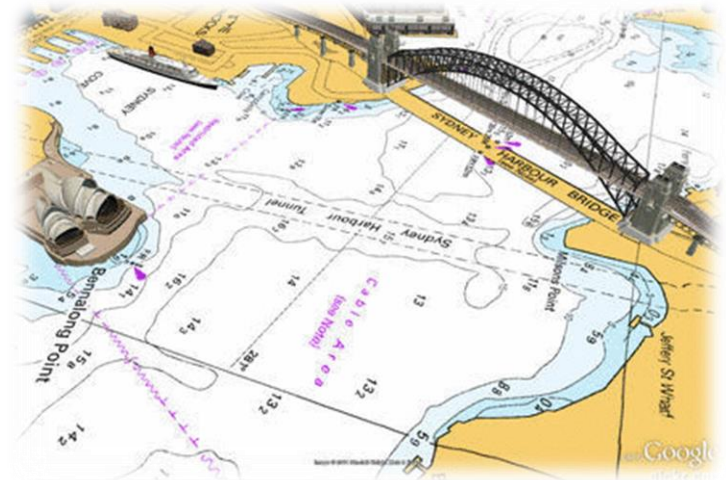
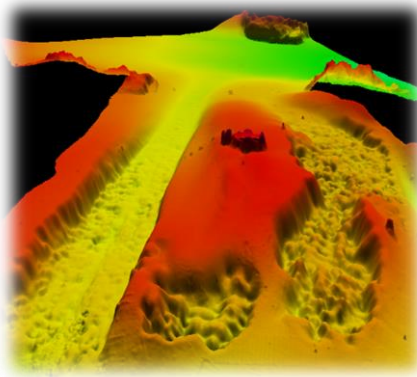
- Survey and monitor the seabed depths within the Channels and Berthing Boxes of the ports
- Manage the operation and maintenance of the Realtime Oceanographic Data Information System (RODIS).
- Manage wharf monitoring surveys as part of the Marine Structures Inspection Program.
- Verify and monitor the Corporation's Aids to Navigation

Hydrography and 3D Mapping

Harbour Tunnel

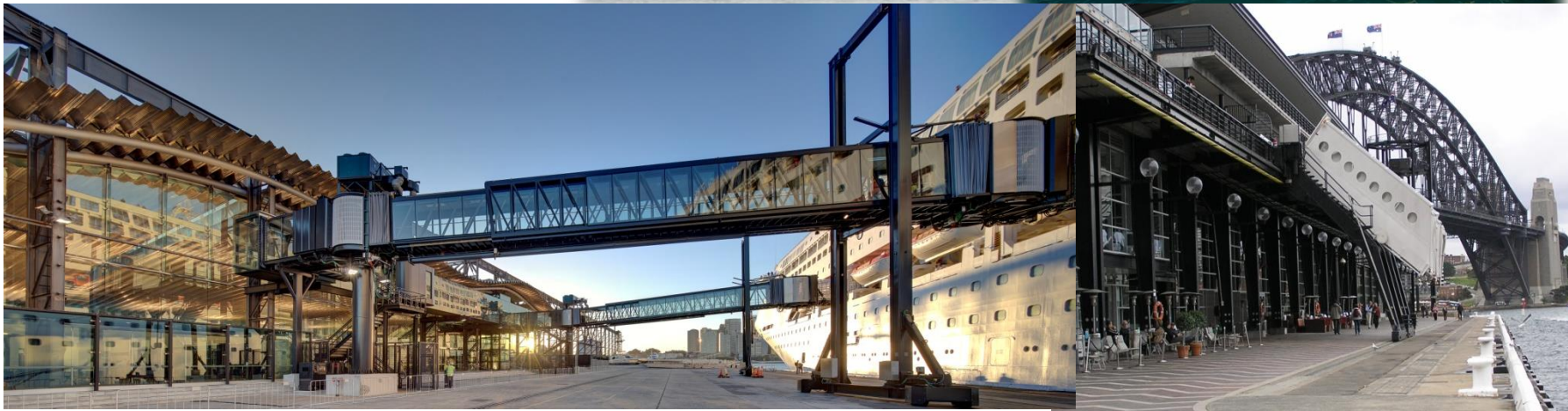


Sydney Harbour Entrance Channels



Marine Operations

- Marine Supervisors
- Port Officers
- Emergency Response Team
- Launch Crews



Powers of the HM

The Harbour Master has the power to direct

The time and manner in which any vessel may enter, manoeuvre within or leave the port

The position and the manner in which any vessel may anchor or be secured within the Port

The time and manner of the taking in or discharging by any vessel within the port of cargo, stores, fuel, fresh water or water ballast

The securing or removal of any vessel within the port in, from, or to any position as the Harbour Master thinks fit.

Sounds easy – but what if stakeholders don't want to be directed!



Challenges

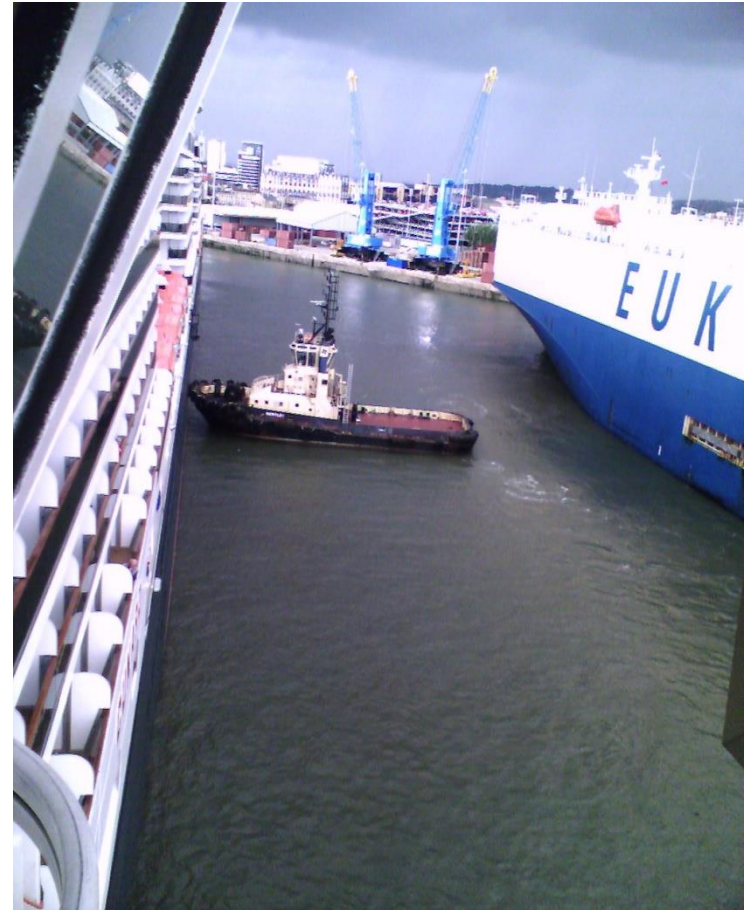
Larger ships – Same size port

Cruise ship beam – 32m

RoRo beam – 32m

Tug LOA – 30m

Manoeuvring room – not much!





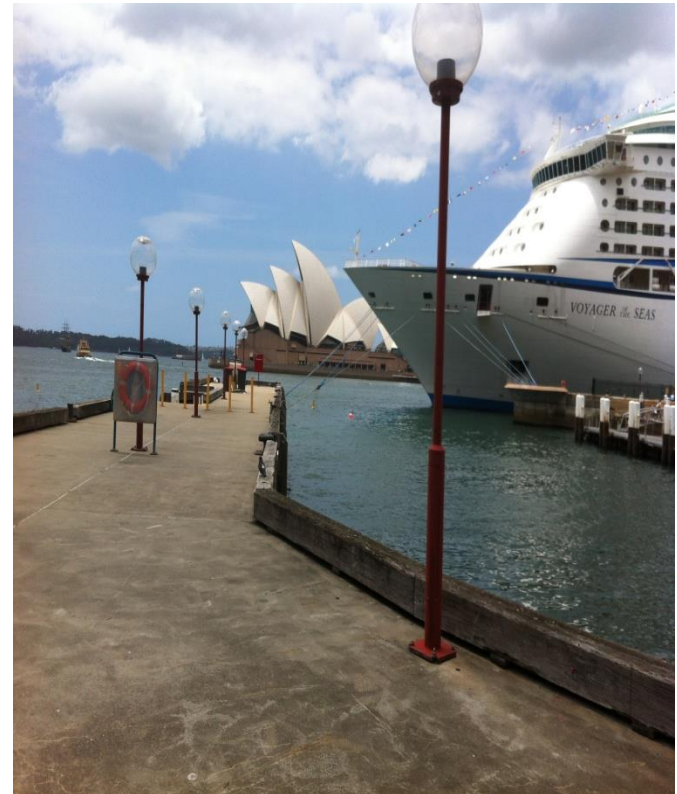
Closer to my new home



Increasing Pressures

Cruise Ship Visits to the OPT

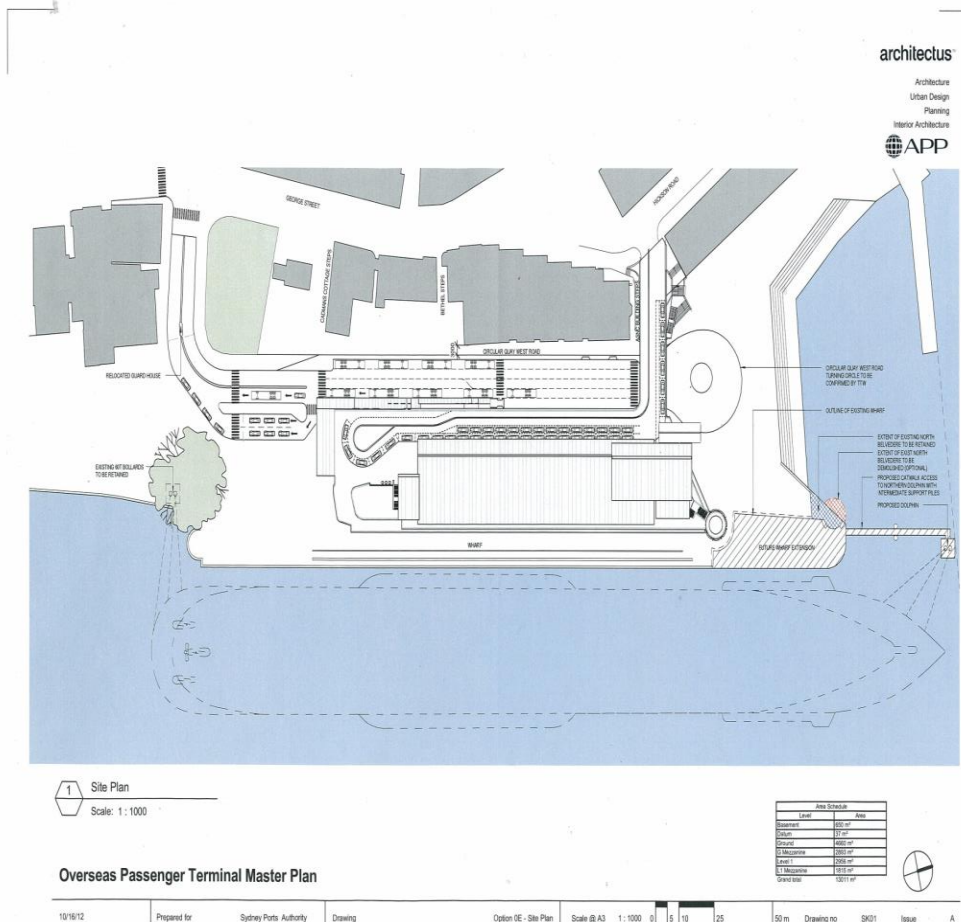
Year	No. Of Ships	Max Pax Exchange
1995	36	<4000
2000	18	<4000
2002	22	<4000
2004	20	<4000
2006	33	<4000
2008	46	4000
2010	55	4200
2011	63	4200
2012	100	>7000
2013*	141	>7000
2020#	240	>8000



* Based on current schedule

Based on Passenger Cruise Terminal Steering Committee Report

Ship LOA 345m – Quay LOA 220m



Solutions

Communication and planning are the key

Honesty and teamwork provide best results



There is always room for improvement.

How we improve depends on whether you are a cruise operator, or a passenger, or a ferry commuter, or a recreational sailor, or a local resident, or a kayaker, or a restaurateur, or

Thank You

